



COOPERWORKS

INDUSTRIES

Plastic Laminate Products SPECIFICATIONS CATALOG

MADE
IN THE **USA** 

www.cooperworks.com

About Us

For over 20 years, MAC Medical, Inc. has manufactured top quality medical equipment including Warming Cabinets, Sinks, Tables, Casework, Case Carts, IV Stands, Mayo Stands, and many other stainless steel products. In keeping with our history of giving customers exactly what they want, we are excited to introduce **Cooperworks Industries®**, a division of MAC Medical, Inc. Cooperworks offers Plastic Laminate Cabinetry that can be configured to complement many spaces including medical, dental, laboratory, veterinary, educational, and more.

MAC Medical has more than 140 full-time employees operating in a 122,500 square foot manufacturing facility and 8,200 square foot corporate office. The Cooperworks Industries facility provides an additional 48,500 square feet of manufacturing space.

Founded as a solutions-based company, MAC Medical is committed to providing USA-made solutions for projects of all sizes distributed in the United States, as well as in 20 countries worldwide. Backed by over 60 years of combined team experience and the best customer service support in the industry, MAC Medical and Cooperworks Industries have the resources to satisfy your specific project needs.



Cooperworks Industries LLC
A Division of MAC Medical, Inc.
200 Admiral Weinel Blvd.
Columbia, Illinois 62236

Phone: 618-503-9171
Toll Free: 877-302-7755
Fax: 618-476-3337
sales@cooperworks.com
www.cooperworks.com



We manufacture the following products:

- Warming Cabinets
- Open & Closed Case Carts
- Surgical Scrub Sinks
- Processing Sinks
- Utility Carts
- Tables
- IV Stands
- Mayo Stands
- Solution Stands
- Linen Hampers
- Kick Buckets
- Step Stools
- Transport Stretchers
- Casework
- Prep & Pack Workstations
- MR Conditional Products
- New!* • Plastic Laminate Casework
- New!* • Laminate & Stainless Steel Mobile Medical Carts
- Any other stainless steel need



Table of Contents

Plastic Laminate Casework Intro	2	Blind Corner Glass Door	17
Base Cabinets	4	Single Solid Door, Glove Dispensing	17
Open	5	Double Solid Door, Glove Dispensing	17
Single Door	5	Corner Solid Door	18
1/4 Drawer	5	Corner Glass Door	18
Single Sink	6	Microwave Solid Door	19
Four 1/4 Drawer	6	One-Tier Wall Shelf	19
BBF Pedestal Single File Drawer	6	Two-Tier Adjustable Wall Shelf	19
FF Pedestal Double File Drawer	6	High Cabinets	20
Two Tier Pull Out Roller Shelf	7	Single Solid Door	21
Double Door	7	Single Glass Door	21
Double 1/4 Drawer Double Door	7	Double Solid Door	22
Open Compartment Double Door	8	Double Glass Door	22
Open Compartment Double Drawer	8	Wardrobe	23
Lateral File 200# Drawer Slides	8	Cabinet Colors	24
Single Drawer Double Door	8	Plastic Laminate Countertop Profiles	27
Blind Solid Door Corner	9	Plastic Laminate Countertop Colors	29
Blind Single Drawer Single Door	9	Solid Surface Countertop Profiles	30
Wall Mounted ADA Sink Shroud	9	Solid Surface Countertop Colors	31
Locking Sink	10	Options & Accessories	32
Double Door ADA Sink / Trash	10	Sinks	32
Drawer Housing Single Drawer	10	Faucets	33
Drawer Housing Double Drawer	10	Door Styles	33
Diagonal Corner	11	Hinges	33
L-Shape Corner	11	Door Pulls	34
Five Drawer Mobile	12	Miscellaneous	34
Single Drawer Double Door Mobile	12	Mobile Medical Carts	36
Double Drawer Double Door Mobile	12	Short Mobile Carts	37
Mobile Work Station	12	Tall Mobile Carts	38
Single Drawer Desk	13	Mobile Cart Accessories	39
Double Drawer Desk	13	Green Initiative	40
Wall Cabinets	14	Warranty Information	41
Open	15		
Single Solid Door	15		
Single Glass Door	15		
Double Solid Door	16		
Double Glass Door	16		
Blind Corner	16		



Wall
Cabinets



High
Cabinets



Base
Cabinets

Plastic Laminate Casework

Cooperworks Industries' full line of plastic laminate Wall Cabinets, Base Cabinets, and High Cabinets can be configured in a number of ways to create the arrangement your facility needs. Choose from solid doors, glass doors, or no doors. Options such as wall shelves and sloping tops are available to further customize your casework to suit your needs. Finally, complete the look with solid surface or laminate countertops offered in a variety of styles and finishes.





Base Cabinets

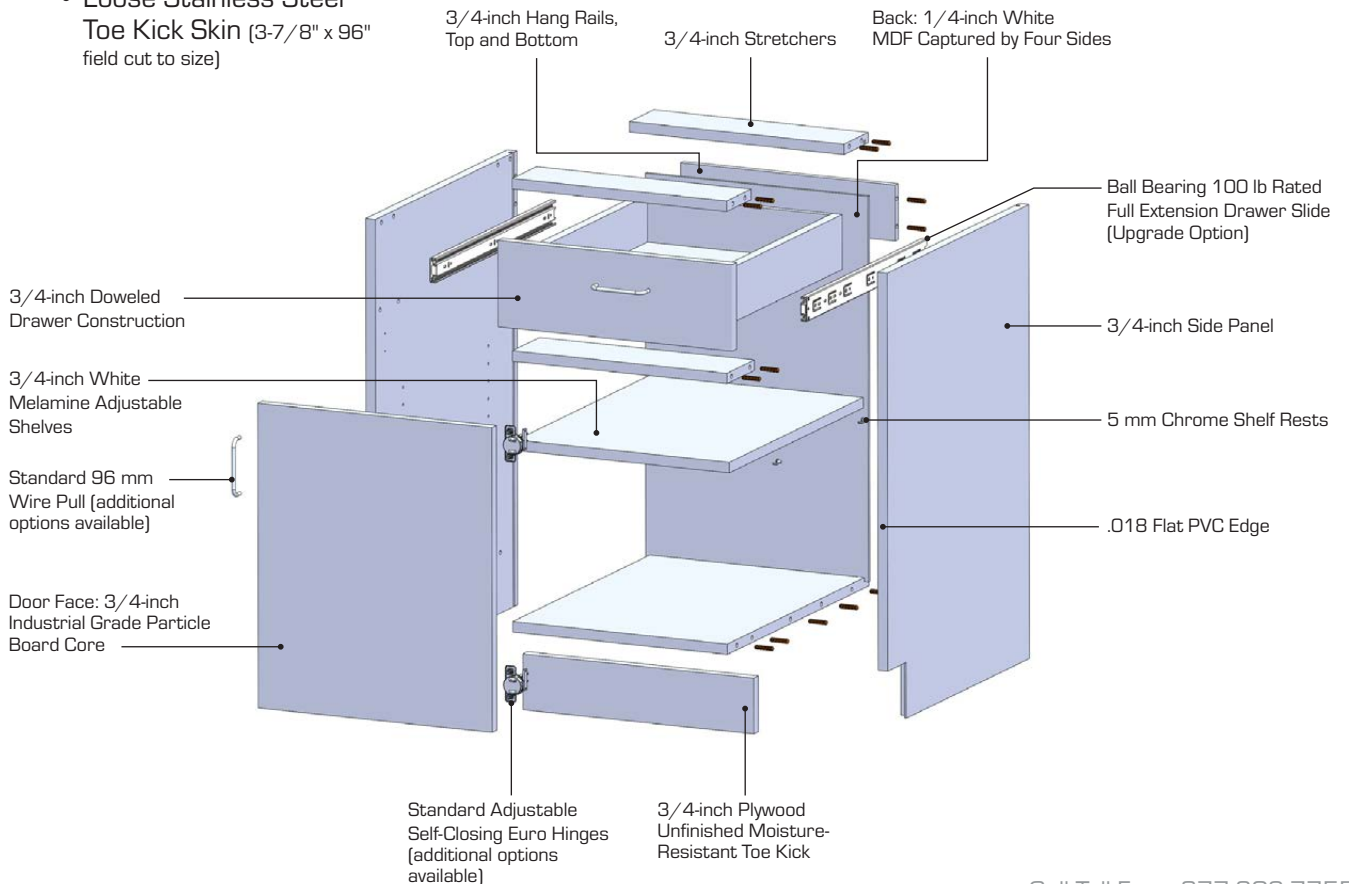
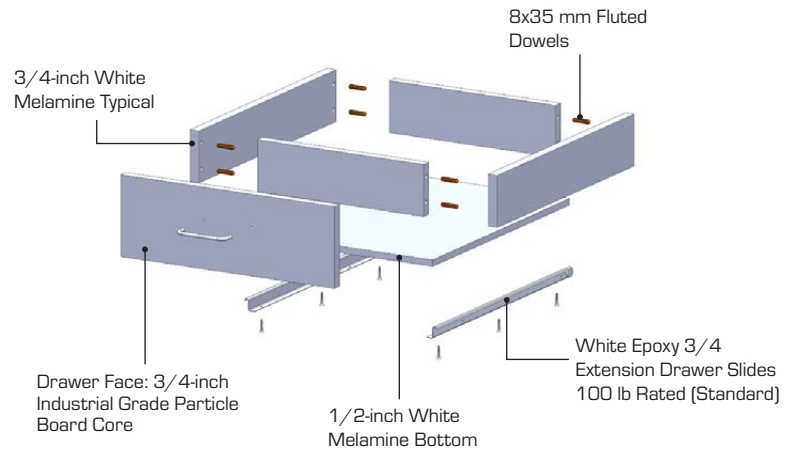
STANDARD FEATURES

- Self-close hinges
- Superior doweled drawer construction
- 3/4 extension white epoxy 100 lb rated drawer slides
- 3/4-inch moisture resistant plywood toe kick

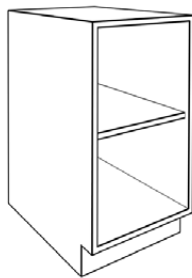
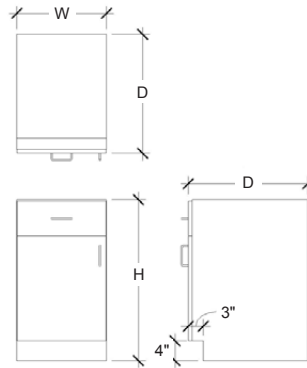
OPTIONS & ACCESSORIES

See pages 32-35.

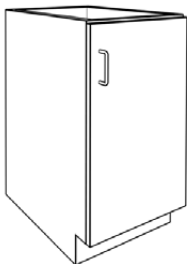
- Locks
- Hinges
- Pulls
- Slides
- Loose Plywood Base
- Loose Stainless Steel Base
- Loose Stainless Steel Toe Kick Skin (3-7/8" x 96" field cut to size)



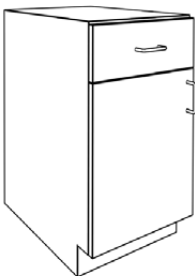
Base Cabinets



LB100			
Width	Height	Depth	Description
12"	28.5"	18"	Open Base Cabinet
15"	32.5"	21"	[1-2] Adjustable Shelves Exposed Interior Matches Exterior
18"	34.5"	24"	
21"		29"	
24"			
27"			
30"			
33"			
36"			

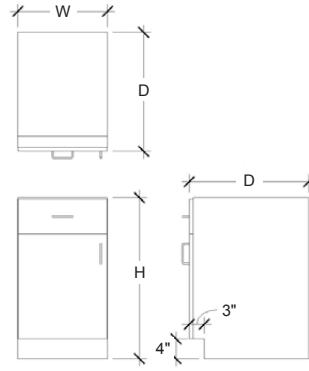


LB101 Left Hinge LB102 Right Hinge (shown)			
Width	Height	Depth	Description
12"	28.5"	18"	Single Door Base Cabinet, L or R
15"	32.5"	21"	
18"	34.5"	24"	[1-2] Adjustable Shelves
21"		29"	
24"			

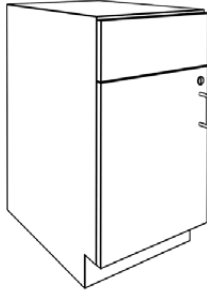


LB103 Left Hinge (shown) LB104 Right Hinge			
Width	Height	Depth	Description
12"	28.5"	18"	1/4 Drawer Door Base Cabinet, L or R
15"	32.5"	21"	
18"	34.5"	24"	[1] Adjustable Shelf
21"		29"	
24"			

Base Cabinets



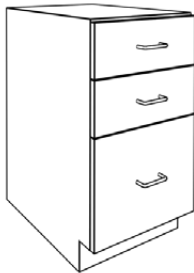
Base Cabinets



LB105 Left Hinge (shown) LB106 Right Hinge			
Width	Height	Depth	Description
18"	28.5"	18"	Single Sink Base Cabinet Optional Lock
21"	32.5"	21"	
24"	34.5"	24"	
		29"	



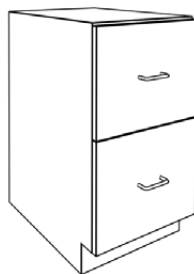
LB107			
Width	Height	Depth	Description
12"	28.5"	18"	(4) 1/4 Drawer Base Cabinet
15"	32.5"	21"	
18"	34.5"	24"	
21"		29"	
24"			



LB108			
Width	Height	Depth	Description
16"	28.5"	18"	BBF Pedestal Single File Drawer Base Cabinet
19"		21"	
		24"	
		29"	

*Center drawer height will vary based on total cabinet height.

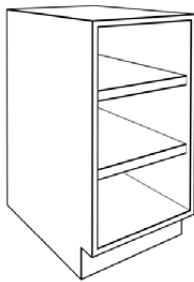
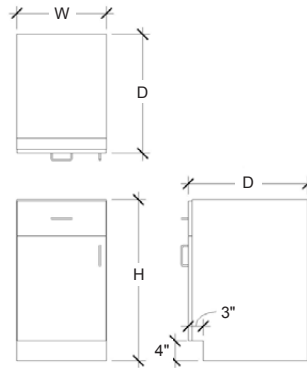
Note: BBF = Box Box File



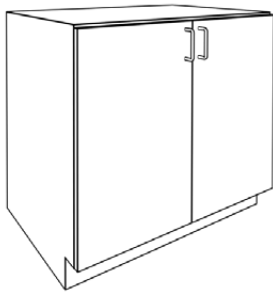
LB109			
Width	Height	Depth	Description
16"	28.5"	18"	FF Pedestal Double File Drawer Base Cabinet
19"		21"	
		24"	
		29"	

Note: FF = File File

Base Cabinets

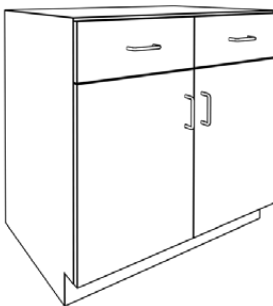


LB110			
Width	Height	Depth	Description
15"	28.5"	18"	Two Tier Pull Out Roller Shelf Base Cabinet
18"	32.5"	21"	
21"	34.5"	24"	[1-2] Adjustable Shelves
24"		29"	
27"			Exposed Interior Matches Exterior
30"			
33"			
36"			



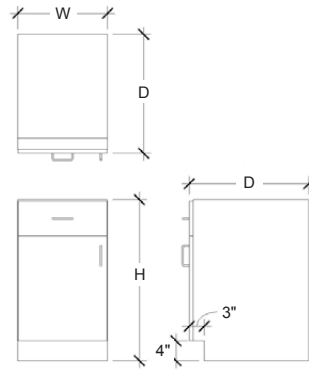
LB120			
Width	Height	Depth	Description
24"	28.5"	18"	Double Door Base Cabinet "Clear Span"
27"	32.5"	21"	
30"	34.5"	24"	[1-2] Adjustable Shelves *
33"		29"	
36"			

*Optional pull out shelves available.

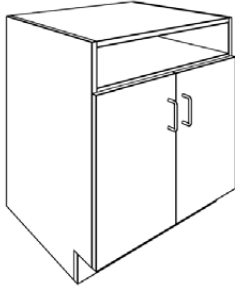


LB121			
Width	Height	Depth	Description
24"	28.5"	18"	Double 1/4 Drawer Double Door Base Cabinet "Clear Span"
27"	32.5"	21"	
30"	34.5"	24"	[1] Adjustable Shelf
33"		29"	
36"			

Base Cabinets



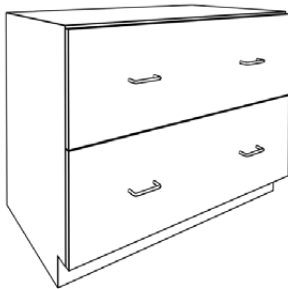
Base Cabinets



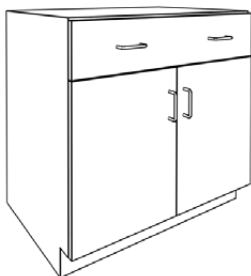
LB122			
Width	Height	Depth	Description
24"	28.5"	18"	Open Compartment Double Door
27"	32.5"	21"	
30"	34.5"	24"	(1) Adjustable Shelf "Clear Span"
33"		29"	
36"			Exposed Interior Matches Exterior



LB123			
Width	Height	Depth	Description
24"	28.5"	18"	Open Compartment Double Drawer
27"	32.5"	21"	
30"	34.5"	24"	(1) Adjustable Shelf "Clear Span"
33"		29"	
36"			Exposed Interior Matches Exterior

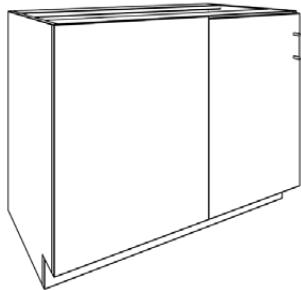
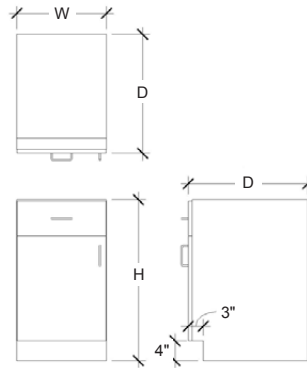


LB124			
Width	Height	Depth	Description
27"	28.5"	18"	Lateral File Base Cabinet 200 lb Drawer Slides
30"		21"	
33"		24"	Specify standard or legal files. Legal not available in 18-inch depth.
36"		29"	

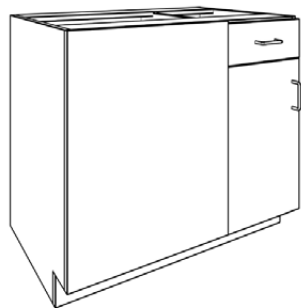


LB125			
Width	Height	Depth	Description
24"	28.5"	18"	Single Drawer Double Door Base Cabinet
27"	32.5"	21"	
30"	34.5"	24"	(1) Adjustable Shelf
33"		29"	
36"			

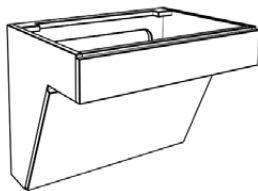
Base Cabinets



LB126 Left Panel Side (shown) LB127 Right Panel Side			
Width	Height	Depth	Description
39"	28.5"	18"	Blind Full Door Corner Cabinet
42"	32.5"	21"	
45"	34.5"	24"	[1] Adjustable Shelf

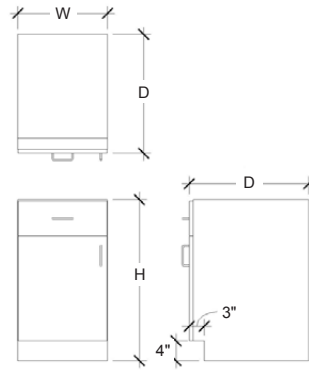


LB128 Left Panel Side (shown) LB129 Right Panel Side			
Width	Height	Depth	Description
39"	28.5"	18"	Blind Single Drawer Over Single Door Base Cabinet
42"	32.5"	21"	
45"	34.5"	24"	[1] Adjustable Shelf

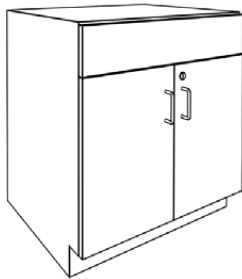


LB140			
Width	Height	Depth	Description
30"	28.5"	21"	Wall Mounted ADA Sink Shroud
33"	32.5"	24"	
36"	34.5"	29"	
39"			
42"			

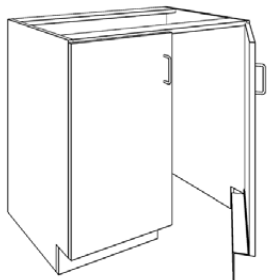
Base Cabinets



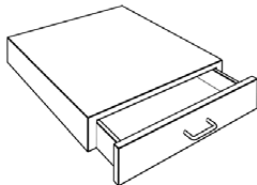
Base Cabinets



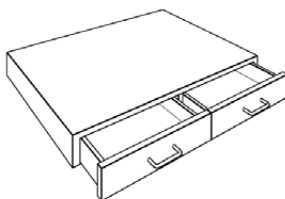
LB141			
Width	Height	Depth	Description
24"	32.5"	18"	Sink Base Cabinet (No Shelves) Optional Lock
27"	34.5"	21"	
30"		24"	
33"		29"	
36"			
39"			
42"			



LB142			
Width	Height	Depth	Description
24"	32.5"	18"	Double Door ADA Sink/Trash (24- and 27-inch Not ADA) No bottom in cabinet Unfinished toe kick attached to door Not available with loose toe kick option
27"	34.5"	21"	
30"		24"	
33"		29"	
36"			
39"			
42"			

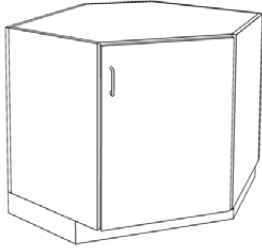
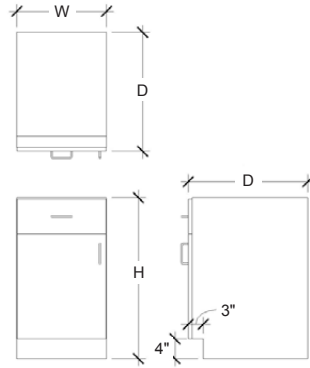


LB150			
Width	Height	Depth	Description
21"	4"	18"	Drawer Housing Single Drawer Optional Lock
24"	4"		
30"	4"		

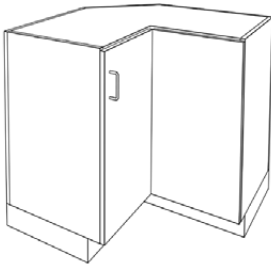
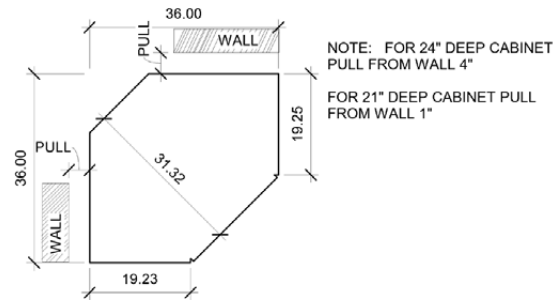


LB151			
Width	Height	Depth	Description
33"	4"	18"	Drawer Housing Double Drawer Optional Locks
36"	4"		
42"	4"		
48"	4"		

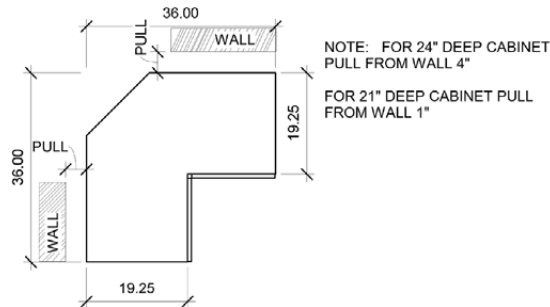
Base Cabinets



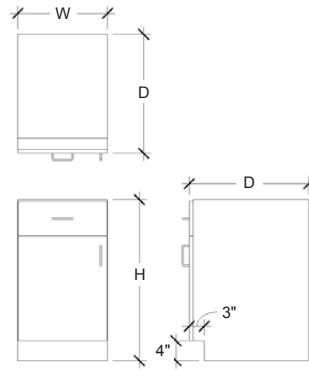
LB160 Left Hinge LB161 Right Hinge (shown)			
Width	Height	Depth	Description
36"	28.5"	36"	Diagonal Corner Base Cabinet
36"	32.5"	36"	
36"	34.5"	36"	(1) Adjustable Shelf



LB162 Left Hinge LB163 Right Hinge (shown)			
Width	Height	Depth	Description
36"	28.5"	36"	L-Shape Corner Base Cabinet
36"	32.5"	36"	(1) Adjustable Shelf
36"	34.5"	36"	Bifold Door Design



Base Cabinets



Base Cabinets



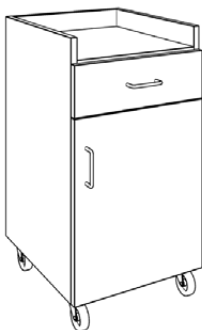
LB170			
Width	Height	Depth	Description
18"	28"	18"	(5) Drawer Mobile Cabinet 3/4" Finished Top Included For Countertop Upgrades See Options.
21"	32"	21"	
24"	34"	24"	



LB171			
Width	Height	Depth	Description
18"	28"	18"	Single Drawer over Double Door Mobile Cabinet 3/4" Matching Top Included (1) Adjustable Shelf For Countertop Upgrades See Options.
21"	32"	21"	
24"	34"	24"	

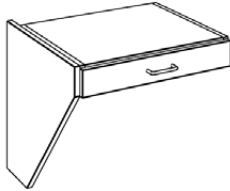
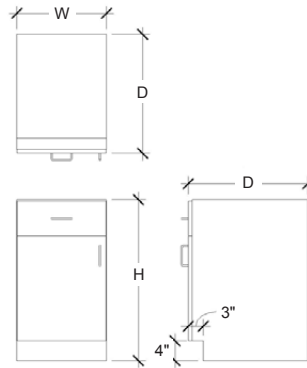


LB172			
Width	Height	Depth	Description
18"	28"	18"	Double Drawer over Double Door Mobile Cabinet 3/4" Matching Top Included For Countertop Upgrades See Options.
21"	32"	21"	
24"	34"	24"	

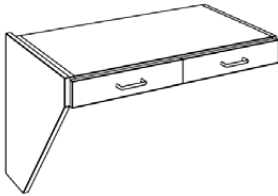


LB173 Right Hinge (shown) LB174 Left Hinge			
Width	Height	Depth	Description
18"	28"	18"	Mobile Work Station (1) Adjustable Shelf
21"	32"	21"	
24"	34"	24"	

Base Cabinets



LB180 Left Bracket (shown) LB181 Right Bracket			
Width	Height	End Panel Depth	Description
24"	-	18"	Desk, Single Drawer (Wall Mounted) Assembly required Countertop sold separately
27"	-	21"	
30"	-	24"	
		29"	



LB182 Left Bracket (shown) LB183 Right Bracket			
Width	Height	End Panel Depth	Description
36"	-	18"	Desk, Double Drawer (Wall Mounted) Assembly required Countertop sold separately
39"	-	21"	
42"	-	24"	
		29"	

Base Cabinets

For questions or to place an order, contact our customer service department at **618-503-9171** or **877-302-7755** or by email at **sales@cooperworks.com**.

Wall Cabinets



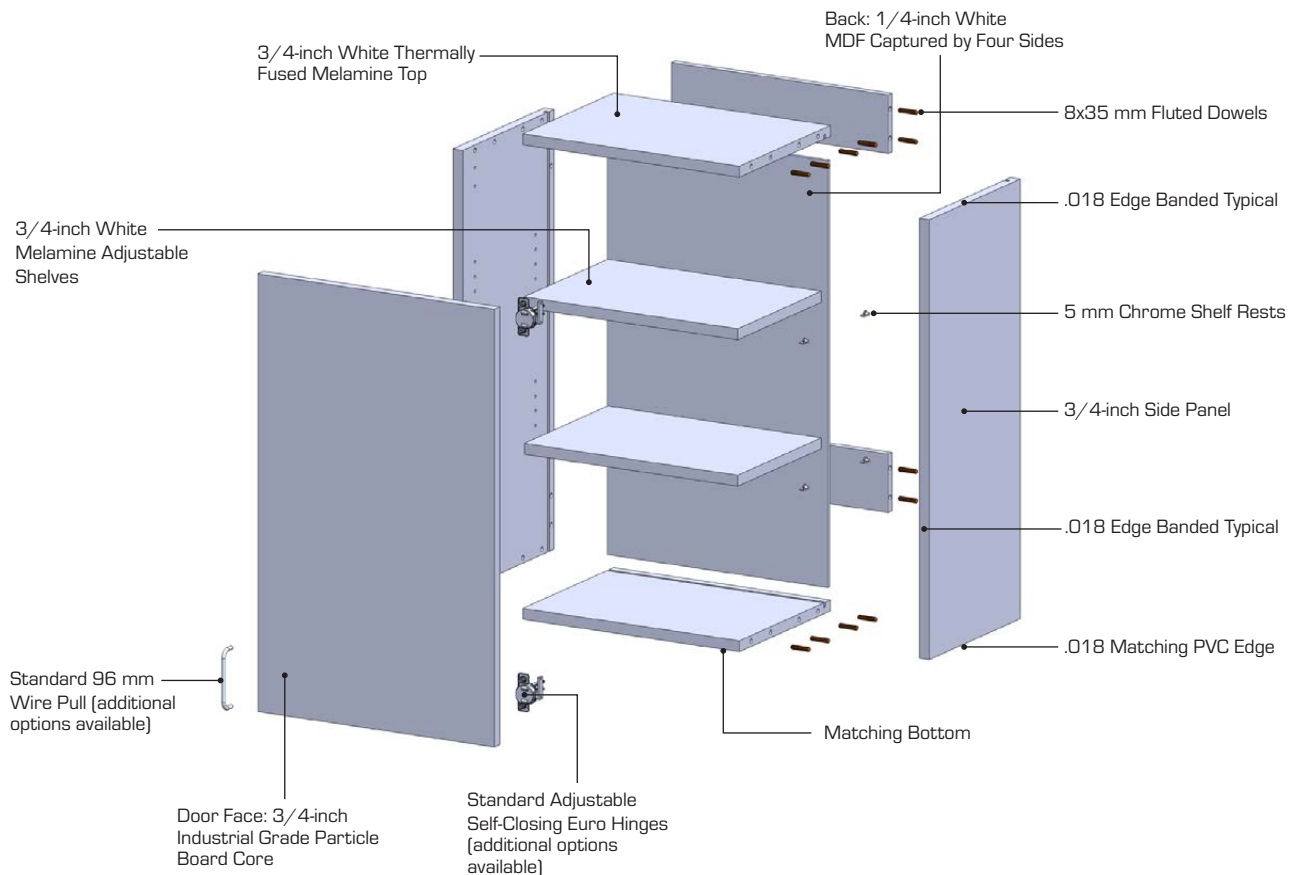
STANDARD FEATURES

- Self-close hinges
- Matching finish on doors and bottoms
- White melamine finished tops

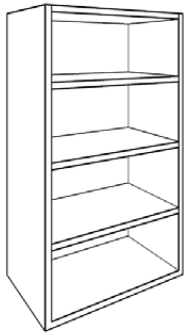
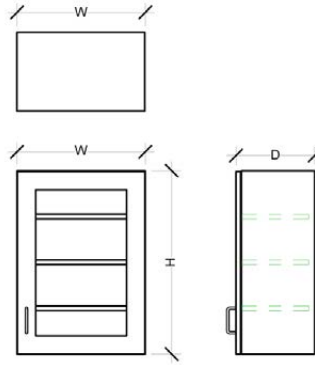
OPTIONS & ACCESSORIES

See pages 32-35.

- Locks
- Hinges
- Pulls
- Light Apron
- Slope Top
- Soffit
- Shelves

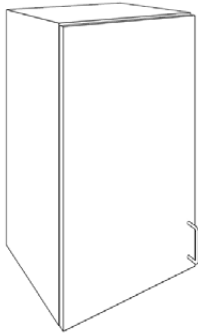


Wall Cabinets



LW100				
Width	Height	Depth*	Shelves	Description
12"	18"	13"	1	Open Wall Cabinet
15"	24"	15"	1	
18"	30"		2	Interior Matches Exterior
21"	36"		2	
24"	42"		3	
27"	48"		3	
30"				
33"				
36"				

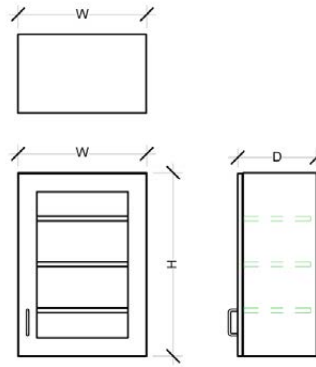
*Actual depth dimension: 13"=12" and 15"=14.25"



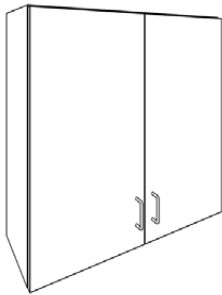
LW101 Left Hinge (shown) LW102 Right Hinge				
Width	Height	Depth	Shelves	Description
12"	18"	13"	1	Single Solid Door Wall Cabinet
15"	24"	15"	1	
18"	30"		2	
21"	36"		2	
24"	42"		3	
	48"		3	



LW103 Left Hinge (shown) LW104 Right Hinge				
Width	Height	Depth	Shelves	Description
12"	18"	13"	1	Single Glass Door Wall Cabinet
15"	24"	15"	1	
18"	30"		2	Interior Matches Exterior
21"	36"		2	
24"	42"		3	
	48"		3	



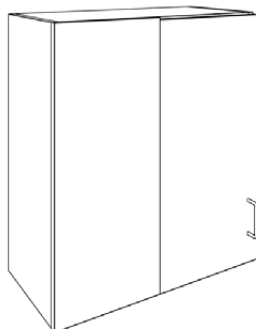
Wall Cabinets



LW110				
Width	Height	Depth	Shelves	Description
24"	12"	13"	0	Double Solid Door Wall Cabinet
27"	15"	15"	0	
30"	18"		1	
33"	24"		1	
36"	30"		2	
	36"		2	
	42"		3	
	48"		3	

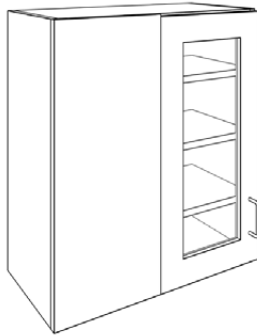
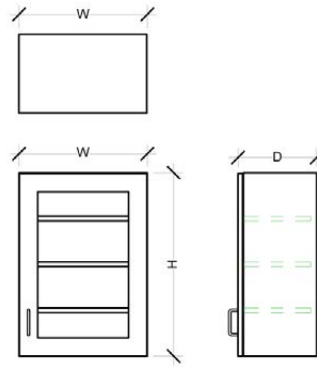


LW111				
Width	Height	Depth	Shelves	Description
24"	12"	13"	0	Double Glass Door Wall Cabinet Interior Matches Exterior
27"	15"	15"	0	
30"	18"		1	
33"	24"		1	
36"	30"		2	
	36"		2	
	42"		3	
	48"		3	

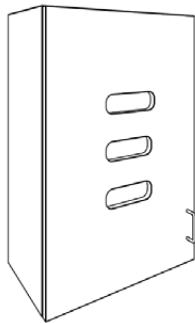


LW112 Left Panel (shown) LW113 Right Panel				
Width	Height	Depth	Shelves	Description
27"	12"	13"	0	Blind Corner Cabinet (Solid Door)
30"	15"	15"	0	
33"	18"		1	
36"	24"		1	
	30"		2	
	36"		2	
	42"		3	
	48"		3	

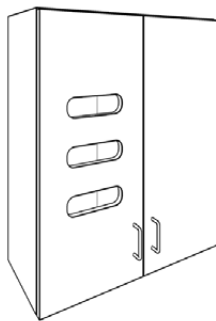
Wall Cabinets



LW114 Left Panel (shown) LW115 Right Panel				
Width	Height	Depth	Shelves	Description
27"	12"	13"	0	Blind Corner Cabinet (Glass Door)
30"	15"	15"	0	
33"	18"		1	Interior Matches Exterior
36"	24"		1	
	30"		2	
	36"		2	
	42"		3	
	48"		3	

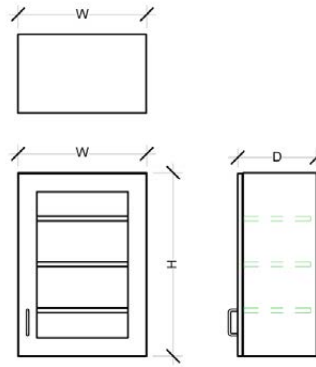


LW120 Left Hinge (shown) LW121 Right Hinge				
Width	Height	Depth	Shelves	Description
18"	30"	13"	0	Single Solid Door Glove Dispensing Wall Cabinet
21"	36"	15"	0	
24"	42"		0	Towel and Cup Dispenser (See Options & Accessories)
	48"		0	



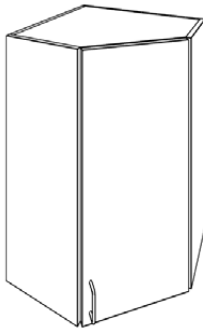
LW122 Left Glove Dispenser (shown) LW123 Right Glove Dispenser				
Width	Height	Depth	Shelves	Description
30"	30"	13"	2	Double Solid Door Glove/Tissue Dispensing Wall Cabinet w/Partition
33"	36"	15"	2	
36"	42"		3	Towel and Cup Dispenser (See Options & Accessories)
	48"		3	

Wall Cabinets



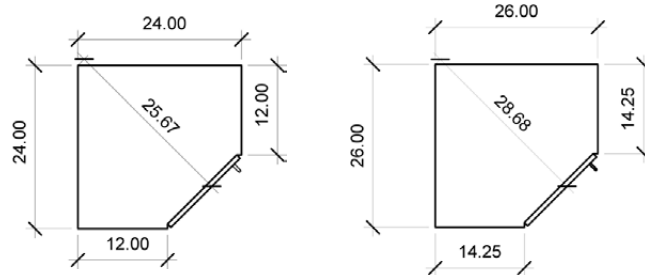
Wall Cabinets

CORNER WALL CABINETS



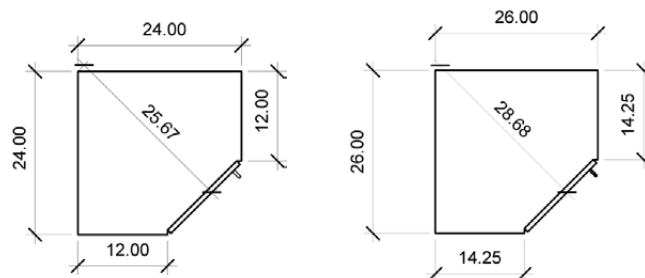
LW130 Left Hinge LW131 Right Hinge (shown)				
Width	Height	Depth*	Shelves	Description
24"	30"	13"	2	Corner Solid Door Wall Cabinet
26"	36"	15"	2	
	42"		3	
	48"		3	

*Depth does not include door



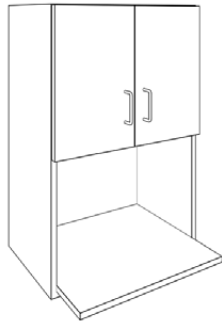
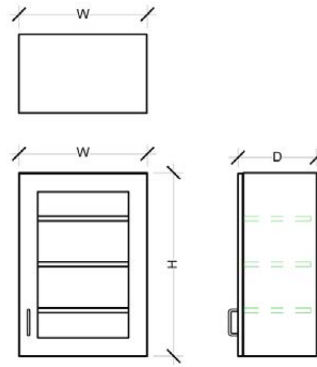
LW132 Left Hinge LW133 Right Hinge (shown)				
Width	Height	Depth*	Shelves	Description
24"	30"	13"	2	Corner Glass Door Wall Cabinet
26"	36"	15"	2	
	42"		3	Interior Matches Exterior
	48"		3	

*Depth does not include door



For questions or to place an order, contact our customer service department at **618-503-9171** or **877-302-7755** or by email at sales@cooperworks.com.

Wall Cabinets



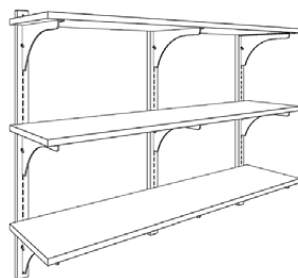
LW140				
Width	Height	Depth	Shelves	Description
24"	30"	13"	[1] 19"	Microwave Solid Door 15.5" Open Height
27"	36"	15"		
30"				Exposed Interior Matches Exterior
33"				
36"				Light Apron*

*Contact factory for ordering details.

WALL SHELVES



S100			
Width	Depth	Brackets per Shelf	Description
24"	12"	2	One-Tier Wall Shelf Specify finish when ordering
36"	14"	3	
48"	16"	3	
60"	18"	3	
72"	20"	3	
84"	22"	5	
96"	24"	5	



AS101			
Width	Depth	Brackets per Shelf	Description
24"	12"	2	Three-Tier Adjustable Wall Shelf Specify finish when ordering
36"	14"	3	
48"	16"	3	
60"	18"	3	
72"	20"	3	
84"	22"	5	
96"	24"	5	

High Cabinets



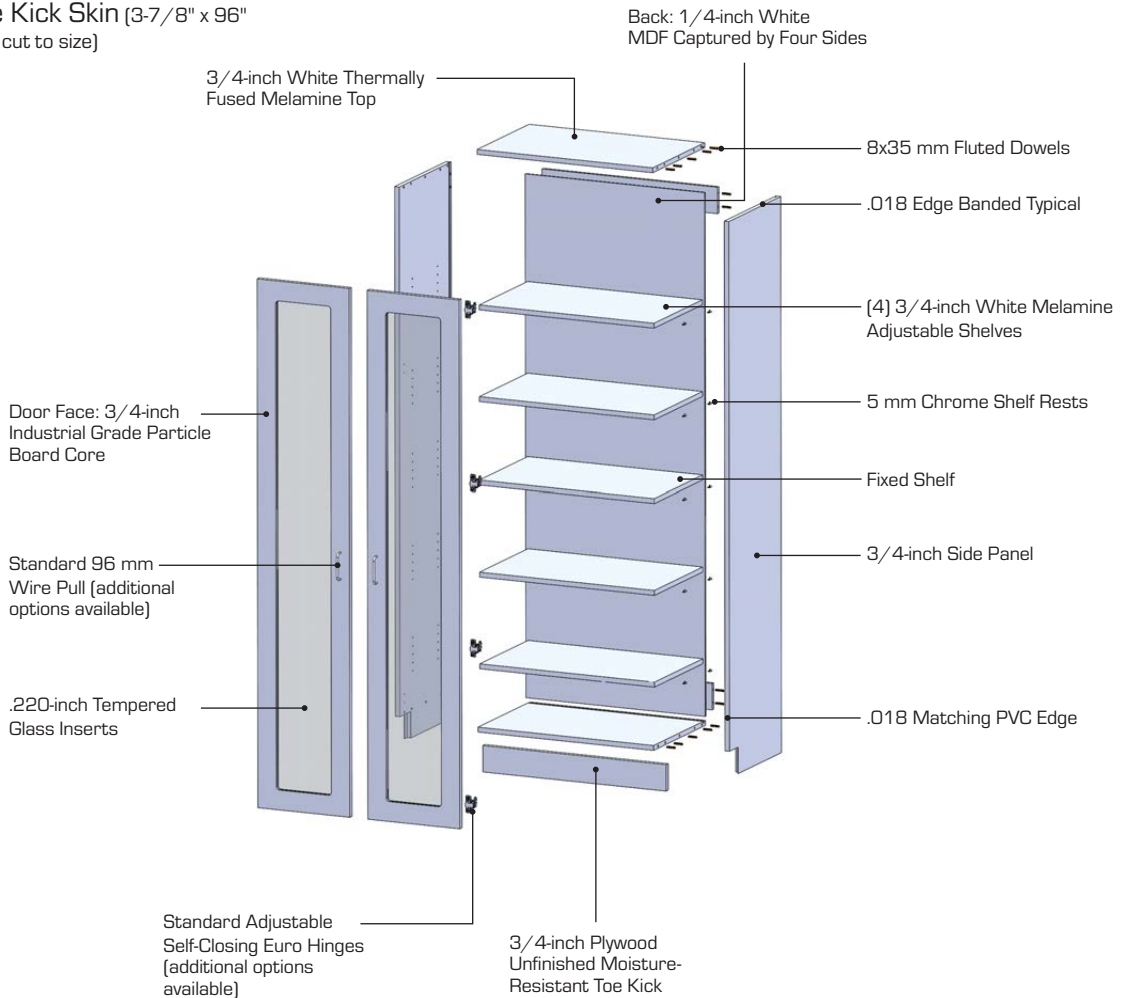
STANDARD FEATURES

- Self-close hinges
- White melamine finished tops

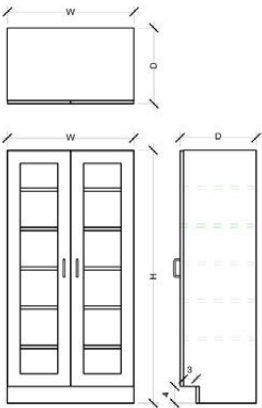
OPTIONS & ACCESSORIES

See pages 32-35.

- Locks
- Hinges
- Pulls
- Slope Top
- Soffit
- Loose Plywood Base
- Loose Stainless Steel Base
- Loose Stainless Steel Toe Kick Skin (3-7/8" x 96" field cut to size)



High Cabinets

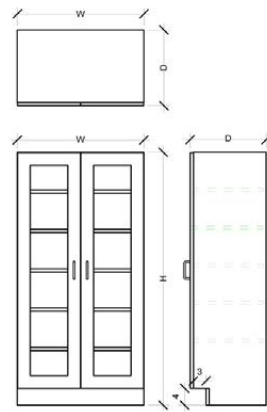


LH100 Left Hinge LH101 Right Hinge (shown)			
Width	Height	Depth	Description
15"	60"	18"	Single Solid Door High Cabinet
18"	72"	21"	(1) Fixed Middle Shelf
21"	84"	24"	(4) Adjustable Shelves
24"	90"		

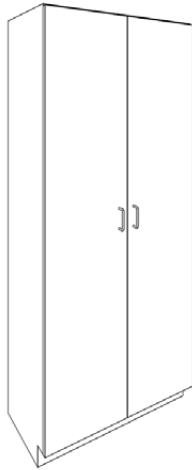


LH102 Left Hinge LH103 Right Hinge (shown)			
Width	Height	Depth	Description
15"	60"	18"	Single Glass Door High Cabinet
18"	72"	21"	(1) Fixed Middle Shelf
21"	84"	24"	(4) Adjustable Shelves
24"	90"		Interior Matches Exterior

High Cabinets



High Cabinets

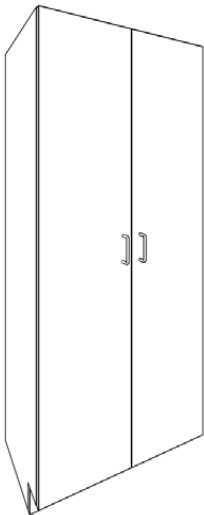
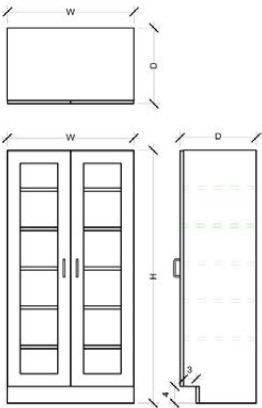


LH110			
Width	Height	Depth	Description
24"	60"	18"	Double Solid Door High Cabinet (1) Fixed Middle Shelf (4) Adjustable Shelves
27"	72"	21"	
30"	84"	24"	
33"	90"		
36"			

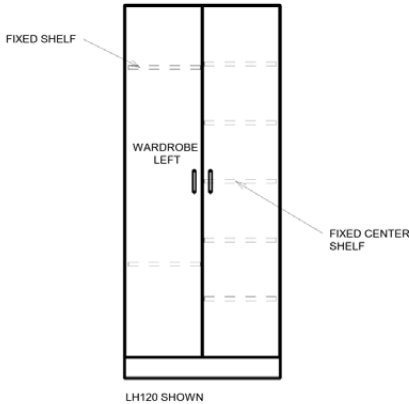


LH111			
Width	Height	Depth	Description
24"	60"	18"	Double Glass Door High Cabinet (1) Fixed Middle Shelf (4) Adjustable Shelves Interior Matches Exterior
27"	72"	21"	
30"	84"	24"	
33"	90"		
36"			

High Cabinets



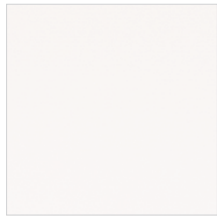
LH120 Left Wardrobe [shown] LH121 Right Wardrobe			
Width	Height	Depth	Description
24"	60"	18"	Double Solid Door Wardrobe Cabinet (3) Wardrobe Hooks (2) Fixed Shelves (5) Adjustable Shelves
27"	72"	21"	
30"	84"	24"	
33"	90"		
36"			



High Cabinets

For questions or to place an order, contact our customer service department at **618-503-9171** or **877-302-7755** or by email at sales@cooperworks.com.

INTEGRATE™ HPL Cabinet Colors



Arctic White



Crisp Linen



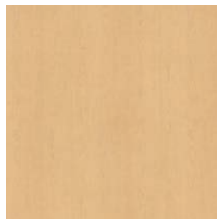
White Cypress



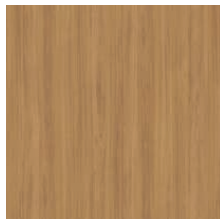
Italian Silver Ash



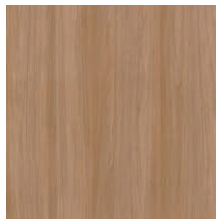
Field Elm



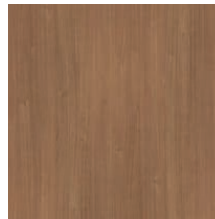
Fusion Maple



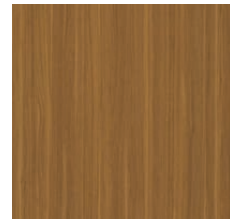
Pasadena Oak



Uptown Walnut



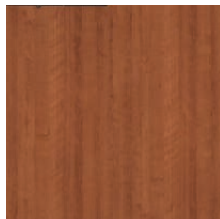
River Cherry



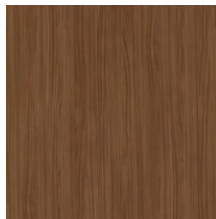
Sap Walnut



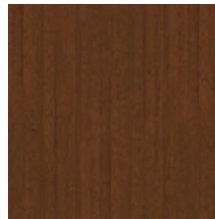
Tuscan Walnut



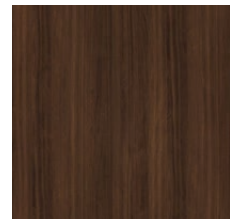
Amber Cherry



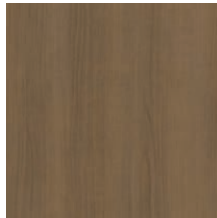
Walnut Heights



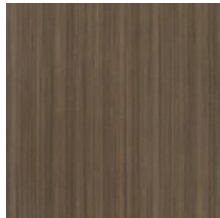
Shaker Cherry



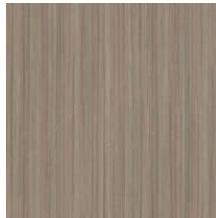
Colombian Walnut



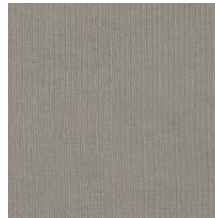
French Pear



Studio Teak



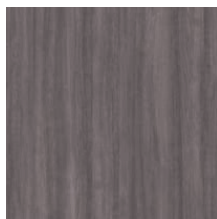
Veranda Teak



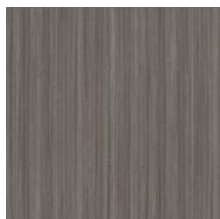
Pewter Mesh



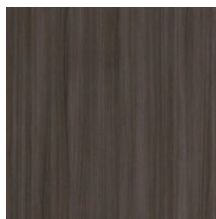
Satin Stainless



Sterling Ash



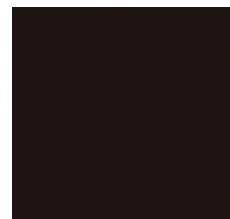
Portico Teak



Skyline Walnut



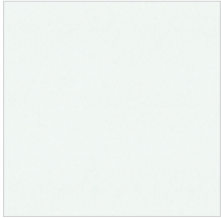
Ebony Recon



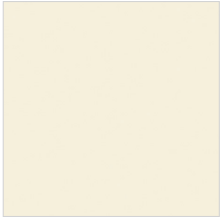
Black

For more color selections contact your sales representative.
All colors subject to availability.

INTRIGUE™ TFL Cabinet Colors



White



Almond



Pearl White



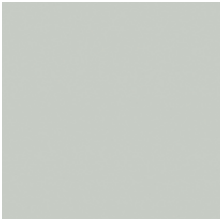
Morning Fog



White Zebrine



Gregio Pine



Folkstone



Fog Grey



Hard Rock Maple



Fusion Maple



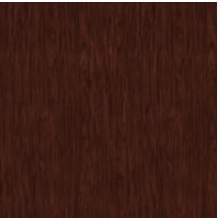
Caramel Apple



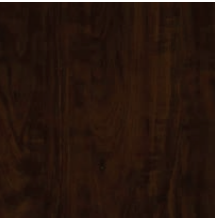
Wild Apple



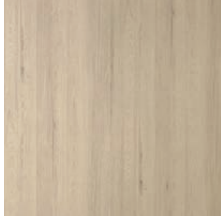
Amber Cherry



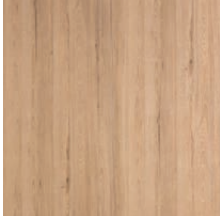
Figured Mahogany



Chocolate Apple



Siberian



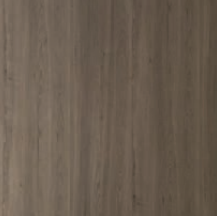
Sabbia



Richmond Cherry



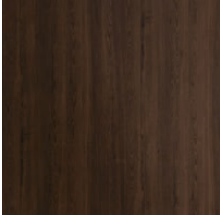
Canella Rustik



Kyushu



Alno



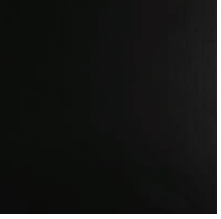
Aliso



Brazilian Walnut



Black



Black Ice

For more color selections contact your sales representative.
All colors subject to availability.

Cabinet Colors

INSPIRE™ Vinyl Foil Cabinet Colors



Stratus



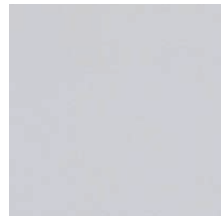
Winter Fun



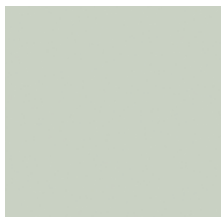
Mist



Swiss Elm



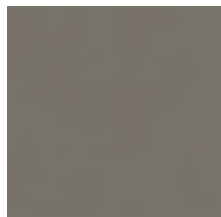
Fashion Grey



Aloe



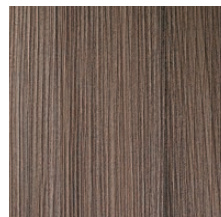
Sage



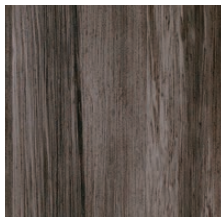
Gauntlet



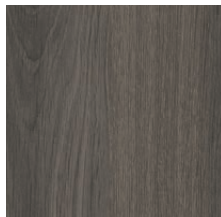
Wharf



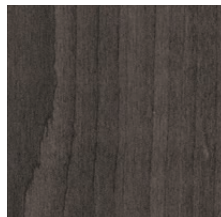
Outer Banks



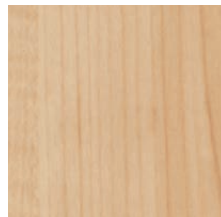
Royal Canyon



Gibraltar



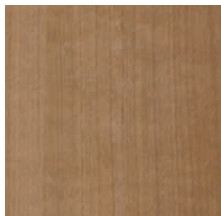
Valencia



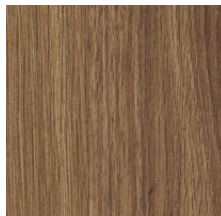
Hard Rock Maple



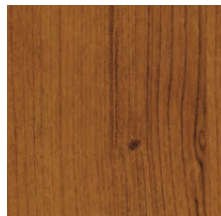
Candlelight



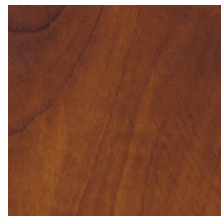
Dolce Vita



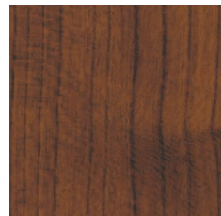
Palomino



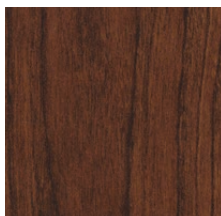
Rustic Cherry



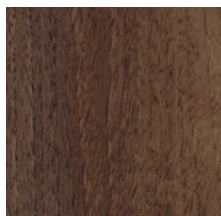
Summerflame



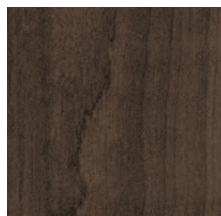
Cherry Blossom



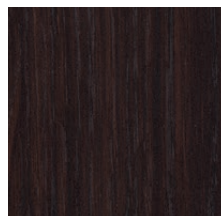
Choco Cherry



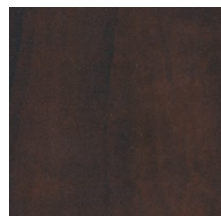
Amati Walnut



Havana



Coffee Bean

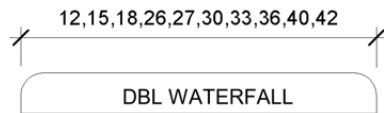
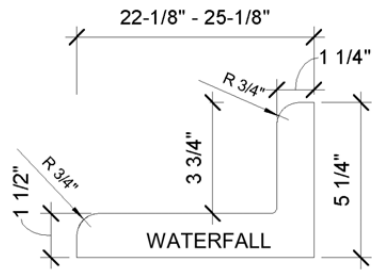
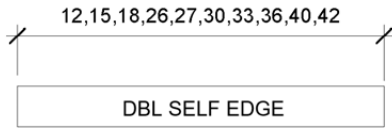
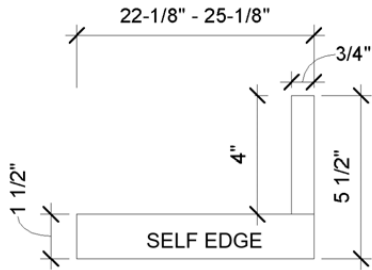
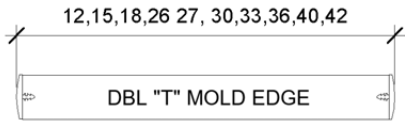
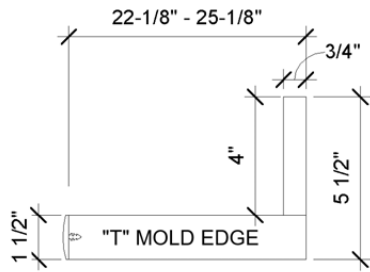
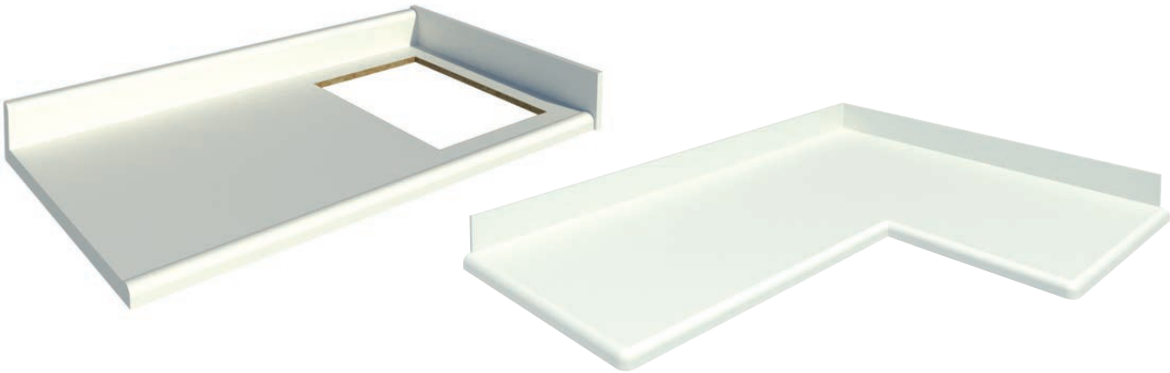


Chocolate Pear

For more color selections contact your sales representative.
All colors subject to availability.

Plastic Laminate Countertop Profiles

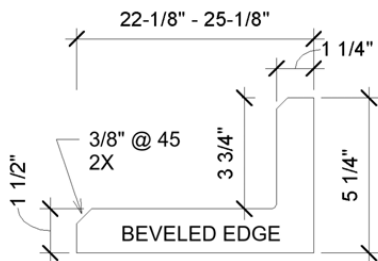
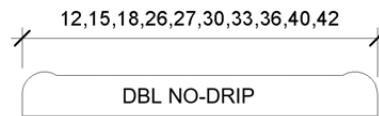
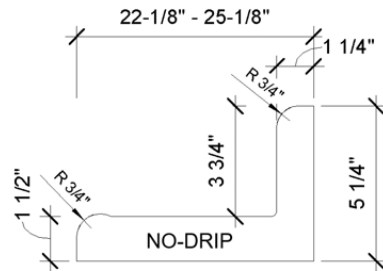
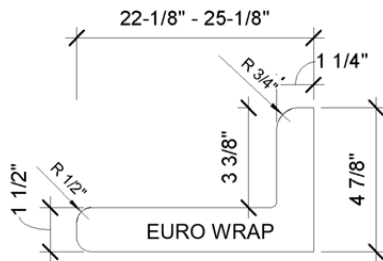
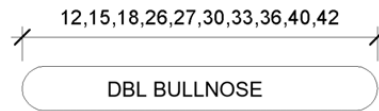
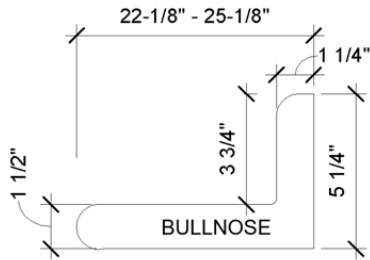
144" maximum length available. Other front edge options available.



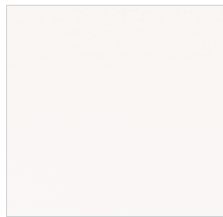
Laminate Countertops

Plastic Laminate Countertop Profiles

144" maximum length available. Other front edge options available.



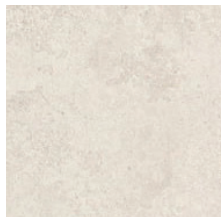
Plastic Laminate Countertop Colors



White



Ribbon Marble



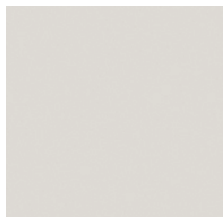
Luna Winter



Mystique Dawn



Kalahari Topaz



Grey



Backyard Patio



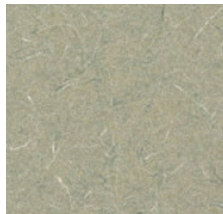
Benjamin Grey



Madura Pearl



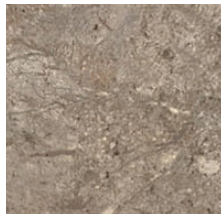
Cafe Di Pesco



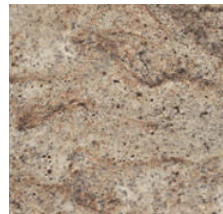
Green Tigris



Bronze Legacy



Mocha Fantastico



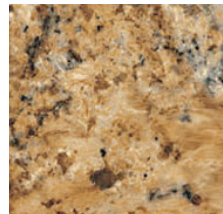
Madura Gold



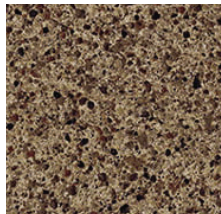
Oxide



Milano Quartz



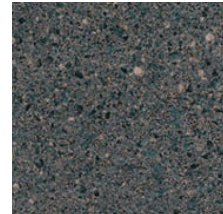
Typhoon Gold



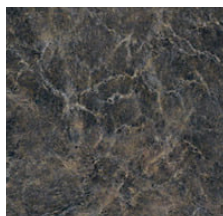
Henna Vesta



Mystique Night



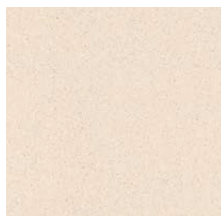
Smoky Topaz



Ebony Fusion



Graphite Nebula



Antimicrobial
Classic Rock



Antimicrobial
House Rock



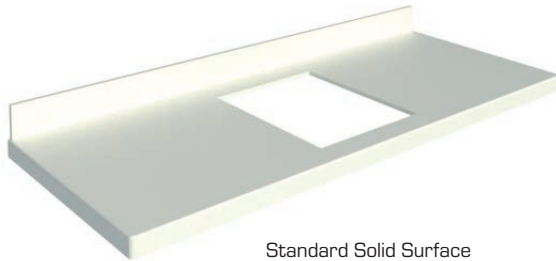
Antimicrobial
Madura Gold Granite

For more color selections contact your sales representative.
All colors subject to availability.

Laminate Countertops

Solid Surface Countertop Profiles

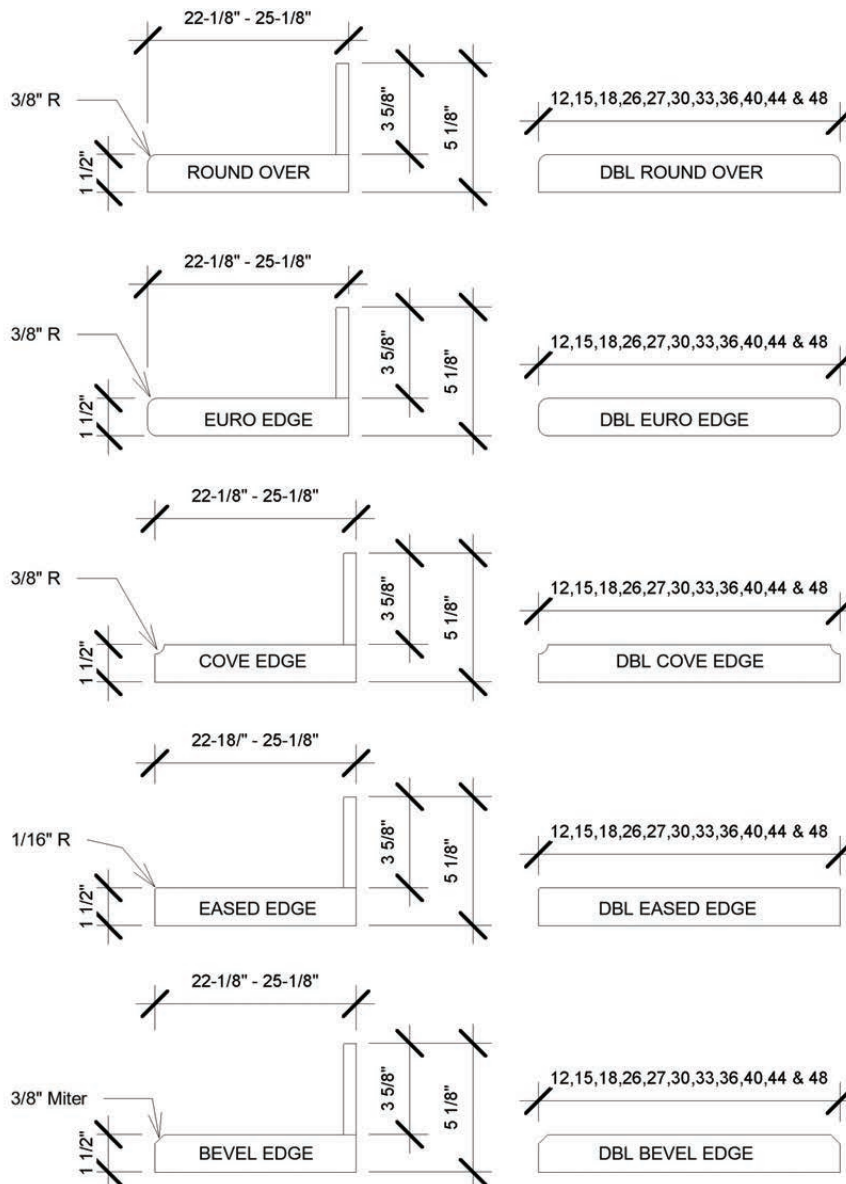
144" maximum length available.



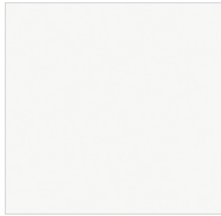
Standard Solid Surface Countertop



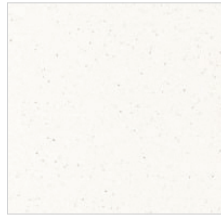
14 gauge (.075nom) 304 #4 Finish Stainless Steel Countertop with Integral Sink



Solid Surface Countertop Colors



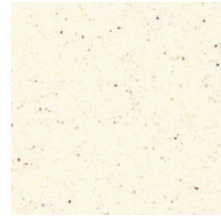
Frosty White



Frosty White Mirage



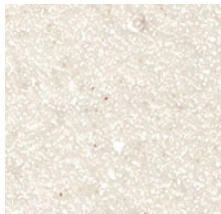
Milk Glass Spectra



Chai Cream



Yukon Riverstone



Pearl Mirage



Arctic Melange



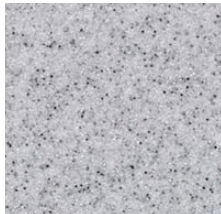
Chilled Earth



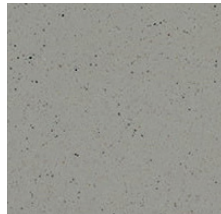
Cashmere Mirage



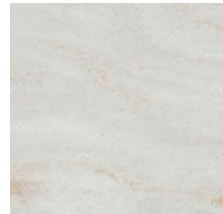
Marzipan Mirage



Grey Tempest



Zen Grey



Beige Travertine
(Premium)



Whitewater
(Premium)



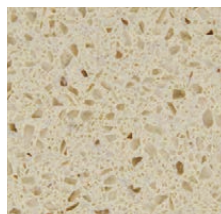
Iron Falls
(Premium)

For more color selections contact your sales representative.
All colors subject to availability.

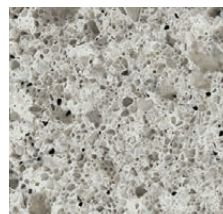
Premium Quartz Countertop Colors



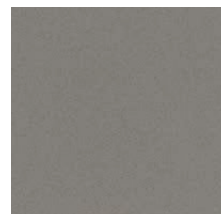
Blizzard



Sand Dollar



Altantic Salt



Cement



Concrete

For more color selections contact your sales representative.
All colors subject to availability.

For questions or to place an order, contact our customer service department at
618-503-9171 or **877-302-7755** or by email at sales@cooperworks.com.

Options & Accessories

SINKS



S.S. Undermount Single Bowl
23"x17"x9"



S.S. Undermount Rectangle
Single Bowl 23"x17"x9"



S.S. Undermount Rectangle
Equal Double Bowl 32"x18"x5.5"



S.S. Drop-In Single Bowl
2 Hole 15"x15"x6"



S.S. Drop-In Rectangle
Single Bowl 3 Hole 15"x15"x6-1/8"



S.S. Drop-In Rectangle Equal
Double Bowl 4 Hole 33"x22"x8"



China Undermount Oval
Solid Surface 18"x14-3/4"



China Undermount Rectangle
Solid Surface 19-1/2"x14-15/16"



China Drop-In 3-Hole
4-in Centerset 19"x19"



Integral Solid Surface
Oval Undermount 18"x13"



Integral Solid Surface
Rectangle Undermount 27"x18"



Integral Solid Surface Undermount
Rectangle Equal Double Bowl 16"x30"

Options & Accessories

FAUCETS



Gooseneck Deck Mount with 8-in Center



Gooseneck Deck Mount with 4-in Center



Gooseneck Deck Mount with 8-in Center

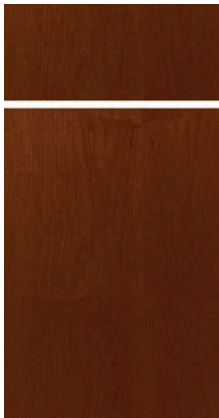


Gooseneck Sensor Faucet



Standard Sensor Faucet

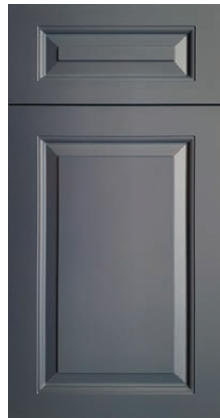
DOOR STYLES



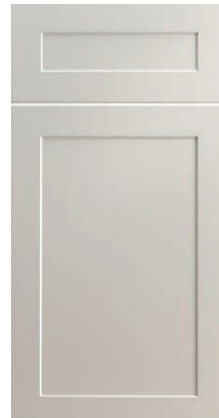
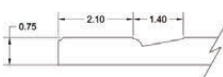
Slab (HPL and TFL)



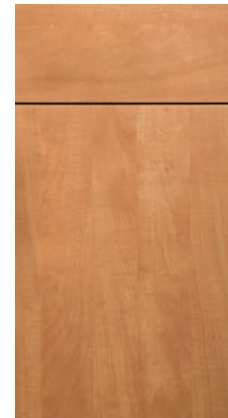
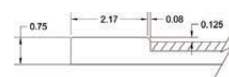
Five-Piece Shaker (TFL)



Classic (Vinyl Foil)



Shaker Shallow (Vinyl Foil)



Elegante Smooth Slab (Vinyl Foil)



Material and color selections vary by door style. For HPL color selections see page 27. For Vinyl Foil color selections see page 28. For TFL color selections see page 29.

HINGES



Self Close



Soft Close



Five Knuckle Stainless Steel Hospital Grade

Options & Accessories

DOOR PULLS

For additional styles and finishes contact your sales representative.



Bar
Brushed Nickel



Bow
Brushed Nickel



96 mm * (3-3/4") Wire
Brushed Nickel

* 128 mm (5") Wire also available



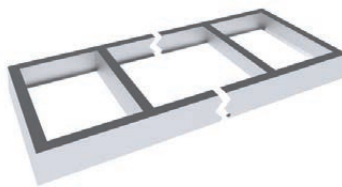
Antimicrobial Copper
by Cuverro®

BASE CABINET OPTIONS

Custom base sizes available.



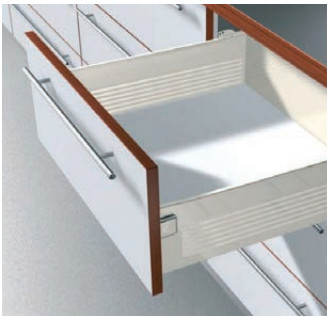
Loose Plywood Base



Loose Stainless Steel Base
(Fabricated to size)



Loose Stainless Steel Toe Kick Skin
(3-7/8" x 96" Field cut to size)



White Metal Drawer Slide

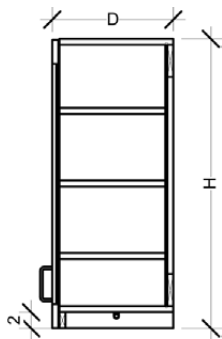


Full Extension Slide

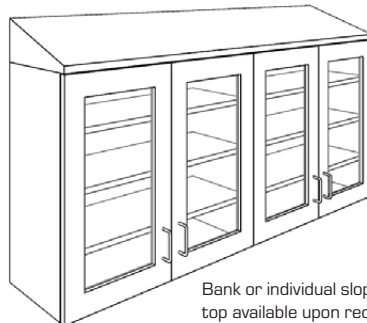


Soft Close Slide

WALL CABINET OPTIONS

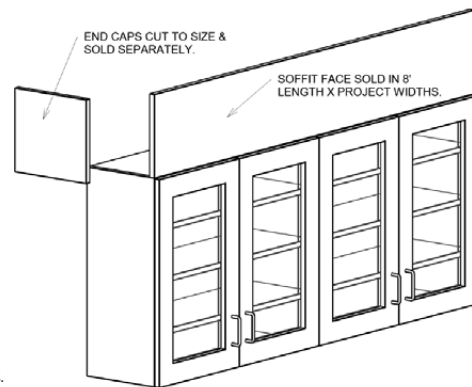


Light Apron



Slope Top

Bank or individual sloping
top available upon request.



Soffit

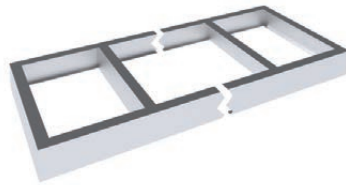
Options & Accessories

HIGH CABINET OPTIONS

Custom base sizes available.



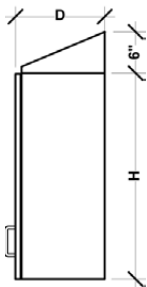
Loose Plywood Base



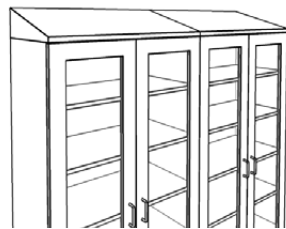
Loose Stainless Steel Base
(Fabricated to size)



Loose Stainless Steel Toe Kick Skin
(3-7/8" x 96" field cut to size)



Slope Top



Bank or individual
sloping top available
upon request.



Soffit

END CAPS CUT TO SIZE &
SOLD SEPARATELY.

ACCESSORIES FOR CABINETS



Digital E-Lock



Cam Lock
(Keyed separately or keyed alike)



3/4-inch End Panel



End Panels with Attached
3-inch Filler, Left or Right
(Backside finished white)

ACCESSORIES FOR COUNTERTOPS



12" x 12"



15" x 15"



18" x 18"



18" x 24"



24" x 29"

A&M Braces

- Black
- White
- Almond
- Gray
- Brown Pionite



2-3/8" Wire



12" Stainless Steel Wire



6" Trash Wire

Grommets

Laminate & Stainless Steel Mobile Medical Carts



CooperWorks' NEW full line of laminate mobile medical carts can be configured in a number of ways to create the arrangement your facility needs. Several optional features are available also. As with all our products, our NEW line of laminate mobile medical carts are built with quality and durability in mind.

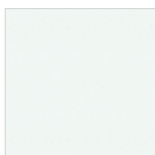
STANDARD FEATURES

- 1 1/4" Base with full wrap around non-marring bumper
- Storage panels for organizing trays and baskets diagonally or horizontally
- 4" composite casters (2 swivel & 2 locking)
- Magnetic catches on solid and glass doors
- Vinyl anti-roll tops on short models
- Sturdy built cart – perfect for storage, supplies, linens, or distribution

OPTIONAL FEATURES

- NEW! CuVerro® antimicrobial copper alloy handle(s)
- Locks (cam locks or digital e-locks)
- Stainless steel shelf with slide-out hanging racks
- Solid surface tops on short laminate mobile carts
- Total locking casters

MOBILE CART MATERIALS



White TFL Laminate

Durable thermal-fused white laminate is on 3/4" thick high-density engineered wood



Gray TFL Laminate

Durable thermal-fused gray laminate is on 3/4" thick high-density engineered wood



Aluminum HP Laminate

Brushed aluminum high-pressure laminate is a cost effective way to get the appearance of stainless steel at a lower price



Stainless Steel

Fully welded corrosion resistant, hygienic, maintenance free, heavy duty type 304 stainless steel

MOBILE CART MODELS

Short Mobile Carts



MMLCSW245836

Picture above is a wide gray laminate cart with tambour doors, bow handles, cam locks, vinyl anti-roll top, and a *5th wheel for stability



MMLCSM314036

Picture above is a medium width gray laminate cart with glass doors, vinyl anti-roll top, and wire pulls



MMLCSN312436

Picture above is a narrow white laminate cart with solid door, vinyl anti-roll top, and a wire pull

Short Models (36" Tall)		
Base Model #	Overall Dimensions	Cabinet Dimensions
MMLCSW245836	23 3/4"D x 57 7/8"W x 36"H	18 5/8"D x 53 7/8"W x 29 7/8"H
MMLCSM314036	31 1/8"D x 40 1/2"W x 36"H	26 1/2"D x 36 1/2"W x 29 7/8"H
MMLCSN312436	31 1/8"D x 23 3/8"W x 36"H	26 1/2"D x 18"W x 29 7/8"H

Tall Models (78" Tall)		
Base Model #	Overall Dimensions	Cabinet Dimensions
MMLCTW245878	23 3/4"D x 57 7/8"W x 78"H	18 5/8"D x 53 7/8"W x 71 7/8"H
MMLCTM314078	31 1/8"D x 40 1/2"W x 78"H	26 1/2"D x 36 1/2"W x 71 7/8"H
MMLCTN312478	31 1/8"D x 23 3/8"W x 78"H	26 1/2"D x 18"W x 71 7/8"H

Tall Mobile Carts



MMLCTW245878

Picture above is a wide gray laminate cart with tambour doors, bow handles, cam locks, and a 5th wheel for stability



MMLCTM314078

Picture above is a medium width stainless steel cart with glass doors, flat handles, and a digital e-lock



MMLCTN312478

Picture above is a narrow aluminum laminate cart with tambour door, bow handle, and a cam lock

MOBILE CART DOOR STYLES



Solid

Solid doors provide the best security. They are strong and more tamper resistant.



Glass

Glass doors give you the accessibility of seeing what is in your cart without opening the doors.



Tambour

Tambour doors slide open and save space as the doors roll up. You don't have to allow for the doors to swing open.

Door Accessories

Door Pulls



Wire Pull



Antimicrobia
Copper Pull



Flat Pull



Bow Pull

Locks



Cam Lock



Digital E-Lock

Magnetic Catches



Glass and solid doors come with magnetic catches.

MOBILE CART INTERIOR ACCESSORIES

ABS Trays & Baskets

40x60 Clear ISO Models



5cm TRAY - MMT054060
SHORT DIVIDER - MMD0540
LONG DIVIDER - MMD0560



10cm TRAY - MMT104060
SHORT DIVIDER - MMD1040
LONG DIVIDER - MMD1060



20cm TRAY - MMT204060
SHORT DIVIDER - MMD2040
LONG DIVIDER - MMD2060



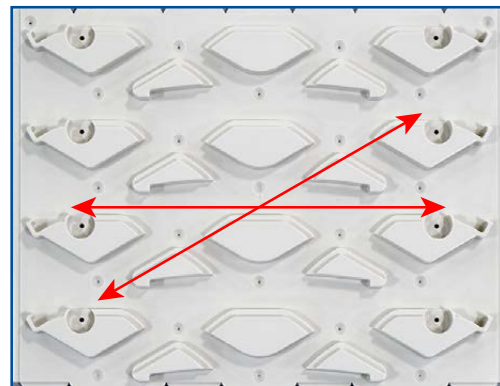
10cm TRAY - MMT104060ND
(NOT DIVIDABLE)
* LID - L4060



10cm BASKET - MMB104060
SHORT DIVIDER - MMD1040
LONG DIVIDER - MMD1060



20cm BASKET - MMB204060
SHORT DIVIDER - MMD2040
LONG DIVIDER - MMD2060



Trays and Baskets can be stored both diagonally and horizontally.



Green Initiative

Cooperworks Industries is committed to making sound decisions to manage our carbon footprint and protect the environment. Our company-wide green initiative considers our impact on the planet and supports our commitment to sustainability.



Recycled Material

Cooperworks' corrugated packaging products have a recycled content of 36%. This is comprised of 30% post-consumer fiber (recycled boxes) and 6% pre-consumer fiber (waste created at the mills that is recycled).

This catalog is printed using 10% recycled paper which equals 1 ton less wood (7 trees saved), 170 gallons less waste water, 440 lb less CO₂ emissions, and .03 million BTU of energy saved.



Facility Lighting

Cooperworks' manufacturing facilities have been outfitted with energy efficient LED lights. LED lights provide a longer operational lifespan and an overall reduction in wattage used.



Manufacturing Practices

Cooperworks practices lean manufacturing, enabling us to deliver high quality products at lower costs and ultimately minimizing our impact on the planet. Our investment in state-of-the-art technology allows for the maximization of each sheet used in production, and minimizes landfill waste.

Warranty Information



3 Year Certificate of Warranty

Cooperworks Industries, LLC, warrants, for a period of three (3) years from the date of installation, the product manufactured by it to be free from defects in material and workmanship when properly installed under normal use. Some variation in the finishes of these products is characteristic, in terms of color and texture, and does not constitute a defect. Cooperworks Industries assigns to the original purchaser, to the extent assignable and without recourse to Cooperworks Industries, any manufacturer's warranty covering component parts of the product. Defective products shall be repaired or replaced at Cooperworks Industries' option at no cost to the original purchaser provided:

- The customer must obtain a written return authorization supplied by Cooperworks Industries' customer service department. The product must be returned, properly packaged, with a copy of the original sales receipt and copy of the RMA authorization. Please call (877) 302-7755 or (618) 503-9171 to receive a return authorization.
- The customer must pre-pay freight charges to and from Cooperworks Industries and must ship merchandise properly packaged, in a way the product will not be damaged during transit to the factory. Cooperworks Industries does not warranty any freight damage to or from the factory. It is the customer's responsibility to inspect the product for packaging damage before signing the BOL.

It is expressly understood and agreed that the limit of Cooperworks Industries' liability shall be, at Cooperworks Industries' sole option, the repair or re-supply of a like quantity of non-defective product, and that Cooperworks Industries shall have no such liability except where the damage results solely from a breach of Cooperworks Industries' warranty. Any claim under this warranty shall be deemed waived unless made in writing and received by Cooperworks Industries within thirty (30) days of the date the defect to which each claim is discovered or would have been discovered, and no later event than three (3) years as aforesaid. The term "original purchaser" as used herein, shall be deemed to mean that party for whom the product is originally installed.

This warranty does not apply to products, which have been subject to abuse, misuse, accident, modification, alteration, tampering, negligence, lack of routine maintenance or misapplication; or products that have been repaired by other than Cooperworks Industries or its authorized representatives. Additionally, this warranty does not apply to component parts not manufactured by Cooperworks Industries. For these component parts, Cooperworks Industries will pass on the original manufacturer's warranty to Cooperworks Industries equipment original purchasers. Please consult factory for questions regarding the warranties of these component parts.

This warranty is expressly in lieu of any and all other warranties, expressed or implied, including the warranties of merchantability and fitness for a particular purpose. Cooperworks Industries makes no other representations or warranties of any kind, and shall not be liable for any incidental, consequential or other damages for any alleged negligence, breach of warranty, or upon any other theory, other than the limited warranty first set forth above. No representative has any authority to change or enlarge the above warranty or Cooperworks Industries' liability. This document supersedes all previous warranty provisions.



Creating unique spaces.



COOPERWORKS
INDUSTRIES

Cooperworks Industries LLC
A Division of MAC Medical, Inc.
200 Admiral Weinel Blvd.
Columbia, Illinois 62236

Phone: (618) 503-9171 • Toll Free: 877-302-7755 • www.cooperworks.com

Printed in USA
Publication No. CFU-03 Rev B
September 2021

Information regarding products is subject to change without prior notice.